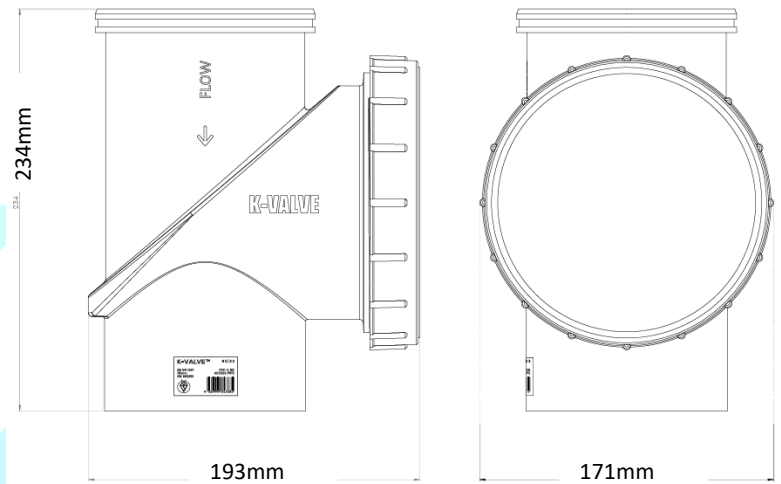
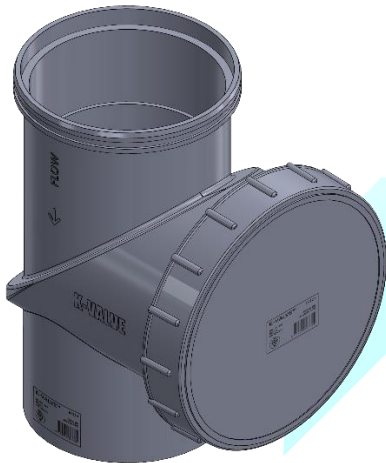


K-VALVE STANDARD INSPECTION TEST OPENING



TECHNICAL INFORMATION:

➤ CONNECTION TYPE	F&F
➤ DIMENSION SIZE	110mm
➤ INSTALLATION AREA	ABOVE GROUND APPLICATIONS
➤ JOINING APPLICATION	-PVC-U PRIMING FLUID, CLEAR OR RED -SOLVENT CEMENT TYPE N, CLEAR OR BLUE

GENERAL INFORMATION:

✓ PIPE APPLICATION	PVC-U (B)
✓ PRODUCT MATERIAL	PVC-U
✓ PRODUCT COLOUR	GREY
✓ PRODUCT CODE	KV-110
✓ PRODUCT STANDARD	BS EN 1329 CERTIFIED
✓ PRODUCT APPROVALS	KITEMARK CERTIFICATION KM 802353
Always use a licensed plumber	

PRODUCT CODE	SIZE	DESCRIPTION	QTY/BOX
KV-110	110mm	F&F	12